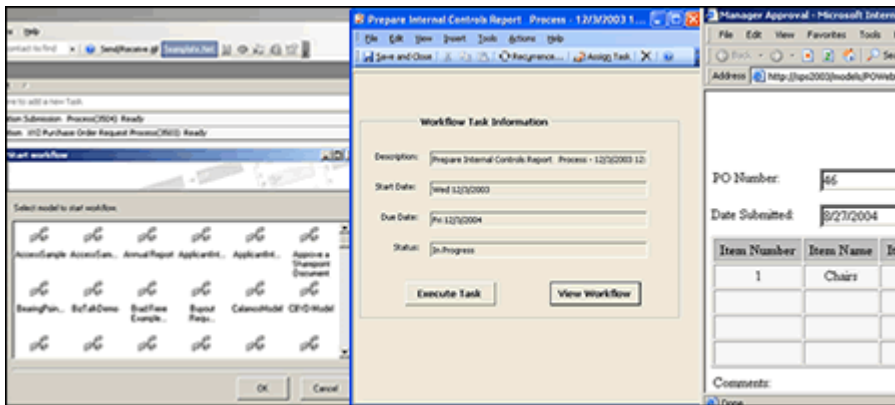




DATASHEET

Captaris® Workflow and Microsoft Exchange Server

Captaris Workflow Extends Microsoft Exchange Server Collaboration Capability with Robust Structured Workflow Capabilities



CAPTARIS WORKFLOW

- **Out-of-the-box Functionality** Captaris Workflow may be integrated with Microsoft Exchange to provide Captaris Workflow Task delivery directly into individual Microsoft Outlook task lists. A workflow may be initiated from within Microsoft Outlook clients or triggered by email arrival events.
- **Empowers Information Workers** Allows anywhere, anytime, any device access
- **Intuitive Interface** User interface that is deployable within Microsoft Office System, SharePoint, or Web delivering streamlined effectiveness, efficiency and accountability
- **ROI and TCO** Delivers measurable Return on Investment (ROI) and a lower Total Cost of Ownership (TCO) compared to other collaboration and workflow solutions
- **Flexibility** Customers have the option of using powerful wizards to design and deploy financial or other business related workflows. Migration to the fully Integrated Design Environment (IDE) allows the automation of any business process.

BENEFITS

- **Visual Interface** A Captaris Workflow solution provides a rich "people to people" user interface that is very easy to learn and use.
- **Delivering a Business Case with Prototypes** Captaris Workflow is easy to demonstrate to decision makers and the Captaris Rapid Process Justification can assist you in accurately projecting ROI and in building a full business case.

KEY DIFFERENTIATORS

- **Pure Microsoft .NET Technology** Developed using Microsoft Visual Studio .NET, C# and XML Web Services
- **Ease-of-use** Captaris Workflow combines robust functionality with ease-of-use for Information Workers, designers, managers and system administrators.

FEATURES AND INTEGRATION

CAPTARIS WORKFLOW PROVIDES EXTENDABLE WORKFLOW FEATURES	
Workflow task delivery to Microsoft Outlook task list	Initiate workflows from Microsoft Outlook
Web and Windows Forms	Database Object, XML Object
Re-useable Custom Actions available within IDE	Parallel Workflow
Graphical Process View which can be used as the user interface	Organizational Chart or Process Hierarchy with extended Profiles
Synchronization of tasks between Microsoft Exchange and Captaris Workflow	Trigger Workflow from Microsoft Exchange or Outlook

The image shows a screenshot of Microsoft Outlook on the left, displaying an email from 'workflow@gdi.com' with the subject 'You've been assigned a task'. The email body contains instructions for completing a task via a web portal. On the right, a flowchart titled 'XYZ Company Purchase Order Request Workflow' illustrates the process. It starts with a 'Request' box, leading to a 'Manager Approval' box. From 'Manager Approval', there are two paths: one for 'Item Total >= \$10,000' leading to 'Finance Approval', and another for 'Item Total < \$10,000' leading to 'Generate PO'. Red dashed arrows indicate 'Manager Declines' and 'Finance Declines' loops back to the 'Request' box.

ABOUT CAPTARIS, INC.

Captaris, Inc. is a leading provider of software products that automate business processes, manage documents electronically and provide efficient information delivery. Our product suite of Captaris RightFax, Captaris Workflow and Captaris Alchemy® is distributed through a global network of leading technology partners. We have customers in financial services, healthcare, government and many other industries, and our products are installed in all of the Fortune 100 and many Global 2000 companies. Headquartered in Bellevue, Washington, Captaris was founded in 1982 and is publicly traded on the Nasdaq National Market under the symbol CAPA. For more information, please visit www.Captaris.com.

©2007 All rights reserved. No part of this publication may be reproduced, transmitted, transcribed, stored in a retrieval system, or translated into any language in any form by any means without the written permission of Captaris. The following are registered trademarks and trademarks of Captaris: Captaris, Alchemy, RightFax, Captaris Document Management, Captaris Interchange and Captaris Workflow. All other brand names and trademarks are the property of their respective owners. MC0010108 RC0107